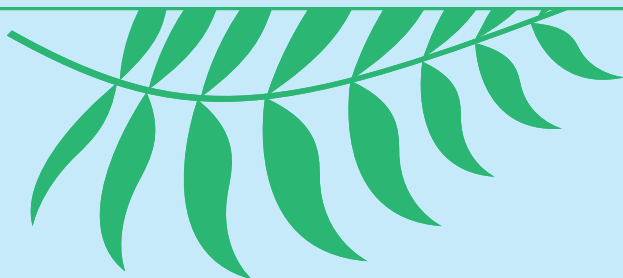


Welcome to Kindergarten

Information Package for Families



Learning in the Spirit of Wonder and Joy



Welcome to Kindergarten in Burnaby Schools

We are excited to welcome your child to Kindergarten in the Burnaby School District. We look forward to getting to know your child, celebrating their strengths, and starting their learning journey at school.



In this package, you will find the following information:

- Gradual Entry,
- Contact From Your Child’s School,
- Registration,
- Parents as Partners, and
- Additional Information and Resources

“Early care and learning for children aged birth to eight is based on an image of the child as capable and full of potential. All children are celebrated as strong, competent in their uniqueness, and having a secure sense of belonging. Children can experiment, investigate, and inquire in ways that are relevant and meaningful to them. They are provided with opportunities to enrich and deepen their relationships with place, land, and community.”

~ [Early Learning Framework](#)

Gradual Entry

You will receive a schedule from your school for your Kindergarten student that facilitates a gradual entry – something in which every new Kindergarten student participates, as they gradually work toward full days at school. Guidelines by the Ministry of Education and Child Care provide for a gradual entry across the province for all Kindergarten students.

For many children, Kindergarten is the first step in transitioning from preschool, child care, or home environments to a more structured setting. The experience the District offers for Kindergarten supports this transition, as your child enters their school community and engages in rich play-based experiences which stimulate thinking, curiosity, creativity, and engagement.

Gradual Entry offers:

- for families to meet with school staff to discuss their child’s needs, and
- for students to:
 - have the opportunity to attend school in smaller groups,
 - connect with their teacher
 - feel comfortable at school,
 - make friends, and
 - understand routines while extending their day over time.

As per the [School Act](#), Kindergarten students may receive up to 25 fewer hours of instruction than children in Grades 1 to 7. This allows for Gradual Entry.

During the Gradual Entry process, you and your child will have an opportunity to visit the school together and participate in a scheduled Welcoming Conversation with Kindergarten staff – this will not necessarily be with your child’s teacher. At this conversation, you will be able to share information about your child, highlighting their strengths and learning styles. This information helps to support their transition into Kindergarten.

If you believe your child requires a longer period to transition to a full day at Kindergarten, please discuss this with your child’s teacher or during the Welcoming Conversation so that school staff can plan with you to best support your child’s successful transition to school.

Contact From Your Child's School

Once you have registered your child, your school will invite you to attend a Welcome to Our School event, which is designed to support families with building a relationship with the school community. This supports learning through nurturing a sense of well-being and belonging for your child. Events may include visiting different parts of the school, listening to a story, engaging in a scavenger hunt, or participating in various play-based activities.

Welcome to Our School events take place in every elementary school in either May, June or early September.

Registration

If you've not yet registered your child for Kindergarten, please be advised that registration opens in February for the following school year.

The Burnaby School District provides Kindergarten at all 41 elementary schools. Families must register at their catchment school based on their home address. Use the [School Locator](#) tool to confirm your catchment.

To complete an online preliminary registration, click [here](#).

Students whose parents reside in Burnaby and who request to attend a Burnaby school from outside of the school's designated attendance area must submit a [Cross-District Transfer Application](#). Cross-District applications must be submitted to the requested school during the month of February in advance of the upcoming school year. Students seeking to attend a school in the Burnaby School District whose parents reside outside of the City of Burnaby's boundaries must also submit in February. They need to complete an [Out-of-District Transfer Application](#).

Parents as Partners

We look forward to partnering with you as your child enters school. Families are the first and most powerful influence on their child's learning, development, health, and well-being.

We respect your role in teaching your child and we strive to build a strong relationship with you, as we work together to guide and support your child during their Kindergarten year and ongoing educational experiences.



Many parents ask us how they can help to support their child's learning. Should you find it of value, please find a Tips for Parents handout on our website [here](#).

Additional Information

BURNABY SCHOOLS RESOURCES



A Day in the Life of a Kindergartener

To watch what a typical day looks like for a Kindergarten student, click [here](#).

French Immersion and Other Programs of Choice

For those interested in the [French Immersion](#) program, application is required. Registration takes place in February in advance of the desired school year. Burnaby residents wishing to apply for French Immersion must first complete the Online Preliminary Registration for your child's [catchment school](#). Please visit our [Registration page](#) for further details.



As your child's educational journey progresses, the Burnaby School District offers many Programs of Choice that offer students a unique opportunity to explore their interests, support their strengths or get exposed to a career. Options range from educational enrichment, such as French Immersion, to sports academies and trades. Learn more [here](#).



Early Years Plan

The Early Years Plan sets out the Burnaby School District's strategy to ensure rich learning over the beginning years of a child's education.

To read it, click [here](#).



MINISTRY OF EDUCATION & CHILD CARE RESOURCES

- [When I Go to Kindergarten](#)
- [Early Learning Framework](#)
- [Learning in the Primary Years](#)
- [Play Today: A Guide for Families](#)
- [Let's Play: Activities for Families](#)

RESOURCES IN THE COMMUNITY

- [YMCA Child Care Resource & Referral](#)
- [Burnaby Public Library](#)
- [Parks, Recreation & Culture](#)